

COMING ATTRACTIONS

NEWS FROM THE CASS COUNTY ECONOMIC DEVELOPMENT CORPORATION

Welcome Ridgeline Manufacturing

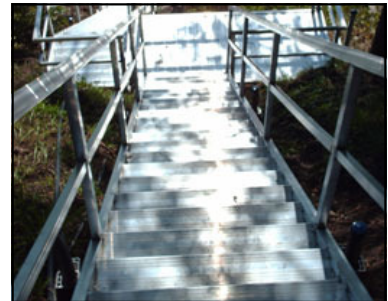


Ridgeline Manufacturing, located at 1074 Dorado Drive in Pillager manufactures docks, boat lifts, canopies and their specialty, custom built lighted stairways.

Ridgeline's owners offer many years of manufacturing experience. Owners Nick and Jerry Newman project the hiring of 15 employees at wages from \$11 -\$19 per hour. Their hiring will include welders, skilled labor and salespersons.

Estimated project costs total \$800,000 with financing coordinated by the Cass County EDC. Bremer Bank was the lead bank on this project, with additional financing from Minnesota Business Finance Corporation and NCEDA coordinating a MIF Grant.

For more information on these products or if you are interested in becoming a dealer, please contact Ridgeline at 218-746-3625.



JOBZ Update

An evaluation of the JOBZ program was released in February, 2008. The findings indicated that some changes would be recommended. The changes to affect Cass County include the following:

- The state will review business subsidy agreements prior to approval by local units of government. This will assure that adequate job and wage requirements have been addressed and protect the integrity of the statute.
- New annual evaluation forms will be drafted that will identify if the business is in compliance with job and wage requirements and meeting their obligations. These forms have not yet been released, so the current reporting deadline has been extended to April 1, 2008.

It was noted that the overall intent of the statute was to bring economic relief to distressed areas of Greater Minnesota, of which Cass County is included. Statewide more than 150 communities and 350 businesses have participated. In our county we have eight JOBZ projects.

Welcome to our new Members!

- Beltrami Electric Cooperative, Inc.
- Haglin, Inc.
- NOR-SON, Inc.
- Riverside Assisted Living, Inc.
- Shingobee Township
- Trussworthy Components

Laundromat in Cass Lake

Look for a new Laundromat to soon be opening in Cass Lake. Major Laundry will offer provide 18 washers and dryers in a variety of sizes with a Rain Soft water treatment system. They will be open six days per week serving Cass Lake residents and area resorts.



Bill Major and Aurlia Washington

Owners Bill Major and Aurlia Washington worked with the Cass County EDC for almost one year on their business plan. Funding was through Western Bank of Cass Lake and NCEDA with a guarantee from the Initiative Foundation. The Bemidji SBDC and the Cass County EDC provided technical assistance with this project.

A COMMUNITY NON-PROFIT CORPORATION

"To improve the business environment of Cass County by encouraging a strong, diverse and sustainable economy and to build better relationships between business, government agencies and local communities."





Cass County Economic Development Corporation

PO Box 142
Backus, MN 56435
218-947-7522

In this Issue

- New EDC Members
- New Business assisted by the EDC
- Note from the Executive Director
- Coming Events
- 2008 EDC Membership Survey Results

We're on the web! www.co.cass.mn.us/edc

Note From the Executive Director

Marketing a community for business development is like marketing your small business.

The following three activities were ranked as most important for local communities to generate business development and create jobs: (1) A group that searches for firms to locate here; (2) a loan fund or venture capital, and; (3) an industrial park. This is according to [101 More Ideas on Economic Development](#) by Cal Clark.

Local economic development networking groups serve as the group that brainstorms for firms to locate in a specific area. The local ED group should include business owners, government, lenders, chambers and

others. The group should have a relationship with an economic development professional to act as the point person and be responsible for providing technical assistance to the business.

There are many local groups promoting Cass County locations. The EDC sees our role as being a "tool in the toolbox," to these local groups. We provide the specialized knowledge, so businesses are able to utilize more public resources and the project will reach completion. This public-private partnership is a specialized resource shared by many and supports the efforts of local ED groups.

2008 EDC Survey

Results are in for the 2008 EDC online membership survey, which is part of the Cass County EDC's five year strategic plan. 47 people responded to the survey – thank you for your input.

55% of survey respondents represented the business segment. 72% said that business recruitment was the most important economic development need within their community.

How do people hear about the EDC- from you! 47% said that they heard about us through another EDC member. 89% said they are satisfied with the services provided from the Cass County EDC and 94% said that they would refer a business to the EDC.

"There are no secrets to success. It is the result of preparation, hard work, learning from failure." Colin Powell

MARKETING YOUR NORTHERN CASS COUNTY BUSINESS

APRIL 2ND, 10:00 A. M. - 3:00 P. M.

&

APRIL 16TH, 9:00 - 11:00 A. M.

DEEP PORTAGE CONSERVATION RESERVE

\$20 INCLUDES TWO SEMINARS AND LUNCH

| | | |
|------------|---|---|
| 10:00 a.m. | Marketing Trade Analysis | Adeel Ahmed University of MN |
| 12:30 p.m. | Lunch | A home cooked meal of soup and sandwiches |
| 1:30 p.m. | Panel Discussion | |
| 2:00 p.m. | Positioning with short group discussion | Pat Swarhout Central Lakes College |

For tickets please contact the EDC or your local chamber

Longville Chamber - (218) 363-2630
Leech Lake Chamber - (800) 833-1118

Pine River Chamber - (218) 587-4000
Hackensack Chamber - (800) 279-6932

Cass County EDC - (218) 947-7522



Presented by the Cass County Economic Development Corporation

Sponsoring Organizations

MINNESOTA SMALL BUSINESS DEVELOPMENT CENTERS



The Cass County EDC is an Equal Opportunity Provider